



Tole Friends' News

DECEMBER 2007

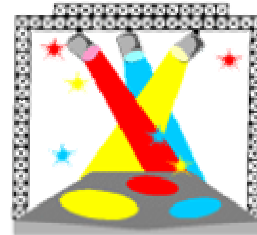


*Merry Christmas and Happy
New Year to all our Tole
Friends!*

Welcome to the Tole Friends' Newsletter!

ARE YOU OUR NEWSLETTER CELEBRITY FOR OCTOBER?

Does YOUR name appear in "sections and parenthesis" somewhere in this newsletter? While reading through this newsletter, if you see your name scattered throughout, it means you are the winner! Contact submissions@tolefriends.net within one week of publication to claim your prize.



Congratulations to our October Celebrity, Trish Griswold of Rochester, NY! Trish rang in pretty darn quickly and chose the "Dutch Iris" by Peggi Severini from the 21 projects featured on the [TF's Fundraiser CD](#).

There is a lot going on in our growing community and we'd like to share the news. So grab a cuppa and sit down and read about all the latest happenings.

DECEMBER FEATURETTE - The DECORATIVE ARTS COLLECTION

The Decorative Arts Collection, DAC for short. An organization with the best interests of preserving and promoting that which we all love – Decorative Art.

On November 9, 2007, the DAC hosted a Gala Opening Reception at their new location in Atlanta, Georgia, (followed by an Open House on the following day) and from all reports, it was a spectacular event. Plaid Enterprise sponsored the gala complete with red carpet and all the trimmings. The very first guests of the new DAC Museum were Deborah Galloway, Sarah Cary, Ann Bunce and Sherry Nelson, MDA. They were all greeted with a warm welcome by Bette Marken.



Tole Friends' monthly free newsletter
You are receiving this newsletter because you signed up for it. If you want to unsubscribe from this newsletter, please send an email to newsletter-unsubscribe@tolefriends.com.

Maureen Smith, of Packets Unlimited, and a regular contributor to our Tole Friend's list was one of the lucky attendees and what follows is her excited impressions of this fabulous event.

"Last night, Mel and I and Jan and Dwight Cumber took the 110 mile trip to attend the Reception. And we are thrilled that we did!"

What an amazing place!!! The museum is located in a wonderful building on the outskirts of Atlanta. The "path" to the museum was lined with wrapped packages so that you couldn't lose your way. When I walked in, I was truly in awe of the wonderful pieces and how they were displayed. There is a room dedicated to the works of Peter Hunt. There are pieces created by Peter Ompir. There are pieces from wonderful artists from all over the world. Tears came to my eyes when I came upon a beautiful bowl painted by Barb Watson. There are pieces in this collection by unknown artists that are just priceless and beautiful. And all of this was just in the first room!!



Then you went into the next room, which is filled with rows of shelves of beautiful, wonderful items, again from international artists. There is a fantastic collection of Santas, all the same piece, but painted by probably 30 or more artists, each giving the piece that artist's own distinctive look.

As you walk through the rows of shelves, you can see fabulous works of art from so many wonderful artists. And you know you must be in decorative painters' heaven!!!

Andy Jones is the director of the Museum. Peggy Harris, the Board of Trustees President, told me that Andy is directly responsible for making the museum so wonderful and beautiful! This has become his passion and he has truly done a magnificent job along with the Board of Trustees.

If you are ever in the Atlanta area, this is a must-see place!!! You won't ever forget your visit!!"

Maureen, thank you for your account of your visit. This truly is a must-see place and I hope that many of our Tole Friends members [California] will one day get a chance to visit this one-of-a-kind treasure. It has truly been a labor of love.

As stated in the latest DAC newsletter: "You have a stake in helping the Decorative Arts Collection fulfill its mission that will lead to bigger and better exposure so the world can become aware of decorative painting". Become a "Friend" and be a part of that mission.

To read more about the museum and/or become a "Friend of the DAC", visit <http://www.decorativeartscollection.org>. We also have a great article on the DAC in our Publication section written by Andy Jones, CDA, <http://www.tolefriends.net/members/TFP/2007-07-dac.html>

CONVENTIONS/HAPPENINGS

Conventions are over for this year and come January's newsletter, we will be adding them in for your pleasure. The first up will be the Creative Painting Convention in Vegas.

If you have a convention link you would like added, please contact us at newsletter@tolefriends.net

Links for most of the large conventions can be found in the [Painting Links](#) section of our website, everyday/all-day, 24/7!

Tole Friends' monthly free newsletter
You are receiving this newsletter because you signed up for it. If you want to
unsubscribe from this newsletter, please send an email to
newsletter-unsubscribe@tolefriends.com.

ADVERTISE WITH US

Do You Advertise with Tole Friends???

Imagine 1,000 people each month being able to view YOUR website with just a click of a button from OUR site. Each button is custom-designed either using your artwork or one we design for you. These buttons are very reasonably priced (the fee to have your button on our site is only \$60.00 US/year and they are available for any decorative art related site) and are on more than 200 of our web pages, and we get a LOT of traffic. The click-through buttons take the user directly to your website. Buttons can be ordered [through our shopping cart](#).

A WELL-KEPT SECRET: PUBLISH WITH TF'S FOR \$\$\$

Many of our members, veteran designers as well as new designers, have no idea that ToleFriend's publishes an online magazine... (Like an online publication) or know that we PAY for submissions just like other magazines. Yes we do!

With fewer and fewer magazines available today, and less shops, many designers have no place to show their designs, let alone be paid for them... so this is the place you'll want to visit, and possibly submit a design that you'd like to have published.

Or... maybe you have a new product you'd like to tell us about. We won't pay for that, but you don't have to either <grin>.

Do you have a specific technique you'd like to write about that is unique to your designs? Let us know about that too.

We do have some rules and guidelines, and they MUST be adhered to, just like any other magazine one would submit designs or articles to, but you may have a good design that we'd like to publish in one of our various categories.

DO read the rules of submitting for any of the categories...
DON'T send us several "zipped" photos and say "pick what you want for whatever"...
DO put your design in the proper category, based on painting level for which you designed.
DON'T send us anything that is now, or ever has been "free" or that is currently on your or other sites available for purchase. While we will accept older designs that are no longer in print, they should not be outdated or of a fad no longer in style.

Those are just a few minor rules, but again... please read ALL the rules in "[Submit for Publication](#)" under whatever category your design or article might fall under, in the top toolbar of <http://tolefriends.com>

Our "Categories" in the Publication include:

History Articles
Painting Technique Articles
Product Review & Announcements
Fast & Easy Painting Projects
Intermediate Painting Projects

We currently have openings in "Fast & Easy" Projects in June and December and "Techniques" for November... all of 2008... and will soon be looking to fill other categories in 2009.

We can't promise we can use what you send us, for we do feel it should appeal to the majority of the membership and we have guidelines to follow as well, but nothing sent will be overlooked and of course, will be kept confidential.

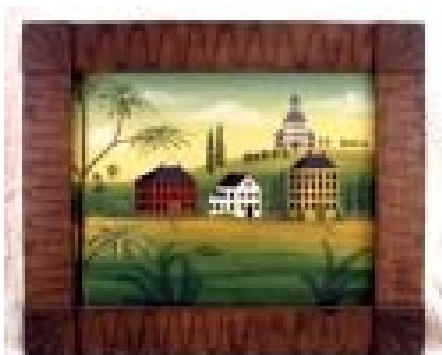
We've also been fortunate to have many of our articles and projects of various categories donated by our designing members and we thank anyone that might care to do that as well. Every little bit helps us to keep helping you in the Education of Decorative Painting.

We'll look forward to seeing your "stuff"!

submissions@tolefriends.net

*Subscribing to and receiving this free newsletter does **NOT** include or constitute a membership or subscription to Tole Friends' Association. All of the following items marked with * in this newsletter are **ONLY available to PAID MEMBERS** of Tole Friends' Association. These are **only part** of all the information that is available for TF members. Non-members are welcome to visit our album site to [view photos](#) of previous lessons painted by our members.*

Highlights for current and future events are:



Lesson 19 – A Primitive Folk Art Landscape by Carol Payne is the very latest in Tole Friends' offerings to you, its members. This lesson will be up until the year-end and will then make way for Scottie Foster's Baurmalerei Lesson on January 1, 2008 (a preview can be seen further in this newsletter).

[The lesson can be downloaded by members.](#)*

ARTICLES:

- [Product Review-#1](#); * Nancy Snellen showing us what to do with all those wonderful products and gadgets we bought at one time or always wanted to buy and we do not know how to use.
- [Product Review-#2](#); * Nancy Snellen giving us more information on what to do with all those wonderful products and gadgets we bought at one time or always wanted to buy and we do not know how to use.
- [Product Review-#3](#); * Nancy Snellen giving us more information on what to do with all those wonderful products and gadgets we bought at one time or always wanted to buy and we do not know how to use.
- [Product Review](#) * So Soft Fabric Paints and More by DecoArt. Learn all the new things you can do with fabric paints.
- [Product Review](#) * Loew-Cornell gives us an inside look at many newer items and products available today.

- [Decorative Arts Collection - A Little History Lesson](#) * Andy Jones writes a fabulous history article on Peter Hunt and Peter Ompire, both very influential to decorative art as we know it. The “Fathers” of Decorative Art. Find out that neither of these two was really named “Peter” and more.....
- [Color Pencil Pattern-of-the-Month Club](#) * Kelly Hoernig writes about her love of color pencils and wanting to share this love with those interested in this “new-to-many” and so very portable and versatile medium
- [History of Bauernmalerei](#) * by Anne Strebe
- [Pen & Ink with Acrylic Washes](#) * by Karen Chase – Karen takes us through a lively discussion of how-to’s from choosing and cleaning a technical pen, surfaces, application and finishing basics
- [New Product Review](#) * – All About Americana Acrylic Paints from DecoArt. Including the introduction of their on-line store

PAINTING PROJECTS:

		
Santa Ornament By Kathleen Ledford	The Colors of Fall By Nancy Snellen	Amber By Helen Jeglic MDA
		
Elegant Eggs By Karen Chase	Primitive Folk Art Lesson By Carol Payne	

		
Bauernmalerei by Scottie Foster Coming in January	Summerflowers on Ceiling Tile By Karen Chase Coming in April	Bubba By Moe Shier Coming in July

A little about the artist of our Publication Project, “Amber”:

Helen Jeglic, MDA, had a beautiful shop that many [Lanka] had the privilege to visit and as a well-known and much sought-after travel teacher and published artist, Helen touched so many and gave them the love of decorative art and colour.

Now we can have the “Helen experience” right here on Tole Friends. Not only do we have a beautiful project, “Amber”, just crying to be painted, but Helen has joined our list and I’m sure would be more than happy to answer any questions.

With the help of our Annie, Helen has a new website and they are bringing many of her out-of-print, but timeless treasures, back for our painting pleasure. I know that many of you may not know of, or have been privileged to know Helen, but through her website and painting, I know that many of you can now experience a little bit of this great talent and legend for yourselves. See what we’re all talking about at <http://helenjeglic.com> and be inspired by her so doable strobework and so much more!

Lessons, articles and projects are only available for a limited time; so do be sure to download them now while they’re still available.

FUN AT TOLE FRIENDS’



A [Members' Showcase Album](#) was added to our albums section in mid-October. We were hoping for members to share a few of their favorite Fall/Halloween themed projects. To date, we have 81 photos! There are ghosts, goblins, pumpkins, cats, scarecrows, witches, leaves, flowers and gorgeous fall colors. Frankenstein even makes a debut. There are glass insulators, gourds, dustpans, smokers (the wooden kind, lol), baskets, clay pots, lightbulbs, plates,

candlesticks, wood cutouts, bowls, inserts, trays, wood boxes, canvas bags, paint buckets, ironing boards, birdhouses, glass jars and more. The projects range from primitives, through to whimsical, realism, strobework, landscapes, florals and still lifes. The imagination and inspiration shared is endless and inspiring.

To view this album, go to <http://tolefriends.net>, log in and go to the Education Centre, then the Album Lesson Photos under the Lessons tab.

Autumn leaves have been falling and appearing on shirts, bags, shoes, candles, clay pots and basket lids. Nancy Snellen’s Fast & Easy Project ["The Colors of Fall"](#) is well-represented in the albums section.

On November 27, 2007, our Phyllis Tilford announced a new week-long survey to solicit opinions on what ToleFriends' Members might like to see for the 2009 line-up of lessons. Answers were fast and furious and even got some of our hardened "lurkers" out from behind their computer screens long enough to have a say. I hope we'll see more of them chatting on our list. Stay-tuned for results of the survey/poll and what direction the ToleFriends Education Committee will take on your behalf.

Stay-tuned for more fun and sharing.

MEMORY BOX PROGRAM UPDATE

Tole Friends runs their own Memory Box Contest and awards prizes throughout the year for memory boxes painted and sent to hospitals within the program.

For the third quarter –
Chapter Winner: Gateway Decorative Artists with 58 boxes.
Individual Winner: Gilly Bursnol with 17 boxes.

A total of 469 boxes were [San José] painted from July through to the end of September 2007. Winners receive a prize package donated by our own Vicky Ausmus. Thanks Vicky for being such a big supporter of the Memory Box Program and Tole Friends!



Stats from the international Memory Box Program <http://www.memoryboxes.org> :
Total number of boxes completed at the end of October 2007 were 102,217

THE TOLE FRIENDS' BOUTIQUE

"Tis the Season" and what better way to celebrate than with a painting gift guaranteed to put a smile on your face or that of your friend's? It's not too late to purchase that last minute gift for yourself or your hard-to-buy for painting friend – what could be quicker than an instant download?



ALL the exclusive designs from the TF's Fundraiser CD are available as [individual e-packets](#) (21 in all).

Go to <http://tolefriends.biz> to check out the packets. Pick your packet(s), click "buy"; you will then see your shopping cart where you can view or change your purchases before heading to the "checkout" or to "continue shopping". Once you choose "checkout", you will be required to type in your details (especially important is your email address).

Choose your payment option at the bottom of the page, you will then be prompted to enter your payment details on the secure server and click send. Then, when the confirmation "thank you for your order" email comes to your inbox (as fast as your server forwards it to your personal inbox), you click on the link "[order status page](#)", type in your order # and email address, click "view" and... up will pop your packet(s) highlighted and waiting for you to save in a folder on your



Check the [Boutique](#) often, as many new items are added frequently. It is open 24/7 for your shopping pleasure.

SPECIAL TIP JUST FOR TOLE FRIENDS' NEWSLETTER SUBSCRIBERS

Instead of using a "dry" paper towel or regular towel to blot your brushes on before a float, use a DAMP compressed cellulose sponge (they come in a package of 3 or more about 6" x 6" at the dollar stores and I cut into about 2" x 3" squares). This ensures you still keep moisture in your brush and is also perfect for using to quickly mop up mistakes on your surfaces (without getting lint on your surface – or paint in your mouth when using your finger, lol)! Just throw away when they get too dirty looking. If your brush gets a little dry while floating, just dip the clean end in a little drop of water left on your palette – it will soak up just enough moisture.

OUT and ABOUT (TF's Community News)

Our thoughts and prayers to Peggi Severini, CDA on the loss of her husband.

We'd also like to send our condolences to Rosemary Reynolds, DecoArt's Helping Artist Coordinator, on the loss of her husband.

And special thoughts and warm hugs to Karen Chase on the passing of her Step-Father.

If you know of someone in our painting community that we should know about/mention, please send us an email at newsletter@tolefriends.net. This would include accomplishments (eg. Certification, awards [Milena], ribbons, first publication...), births, deaths... We can't promise to publish everything, but this is your newsletter and we do want to know and celebrate or cry along with you.

TOP FIVE (5) REASONS TO BE PART OF THE TF's COMMUNITY

- #5 – shared interests and painting passion;
- #4 – almost instantaneous answers to painting questions through the very active list;
- #3 – free lessons with membership;
- #2 – extensive and comprehensive website and members' section chockfull of tips, projects, educational articles and so much more;
- #1 – camaraderie, shared interests and caring members.

Thanks for reading, and for your support! We'll talk to you again in February.

This is a secret too good to be kept... pay it forward - tell your painting friends about the newsletter and be sure to share it with all your chapter members, and anyone interested in painting by forwarding this Newsletter to them. You can also download/print a [flyer](#) to hand out. This can be found on our homepage at <http://tolefriends.com>

Tole Friends
<http://tolefriends.com>

Questions or suggestions for the newsletter can be sent to newsletter@tolefriends.net
(submissions for the newsletter should be received by the middle of the month prior to publication: next submission date Jan 15, 2008)